



Installation Instructions

ERRK3LX848M – 4ft Reflector Fixture Upgrade Kit
ECRK3LX848 – 4ft Channel Fixture Upgrade Kit



ERRK3LX848M

Kits ship with sockets **pre-wired** and **mounted** to socket bars.
Tubes not included.

Materials List

- [1] - LD2PI Luminaire Disconnect
- [3] - TSLX8-LR Red Tube Sockets (Line)
- [3] - TSLX8-NG Green Tube Sockets (Neutral)
- [2] - Adjustable Socket Brackets (fits 4.25" to 5" channels)
- [1] - Black Wire (60-inch)
- [2] - Black Wires (8-inch)
- [1] - White Wire (60-inch)
- [2] - White Wire (8-inch)
- [4] - Tek Screws (#8)
- [1] - 4' **Precision** Reflector - 95% Reflectance (ERRK3LX848M)
- or -
- [1] - 4' Channel Cover with - 91% Reflectance (ECRK3LX848)
- [2] ¼-Turn Fasteners
- [1] - LED Conversion Notice Sticker
- Illustrated Instruction Sheet
- Wiring Diagram*

***EcoHX LED Conversion Kits** are shipped with sockets pre-wired and installed onto the socket bars. Wiring diagrams are provided for reference. Digital copies of instructions and wiring diagrams are available for download at www.HXLightinginc.com.

Applications

Pre-wired conversion kits are intended for use only with **EcoHX X8™ Touch-Safe** Type B Double-end tubes. **EcoHX X8™ Touch-Safe** tubes are UL Certified, include anti-shock technology, and feature glass construction to eliminate sagging and discoloration. Tubes are available in *EXP*, *Outdoor*, *Cool* and *Natural* color. **HX Lighting does not support the use of any other tubes in pre-wired conversion kits.**

Precautions

WARNING! - Read instructions thoroughly before beginning installation. If you are at all unsure of any of the following instructions and precautions, consult a qualified electrical contractor to perform the conversion for you.

RISK OF ELECTROCUTION! – Disconnect power at fuse or breaker panel before attempting any electrical work. Verify that there is no power on the circuit before proceeding with fixture modifications. To prevent wiring damage or abrasion, do not expose wiring to edges of sheet metal or other sharp objects. **Conversion kits are not for use in damp or wet locations.**

RISK OF FIRE! - Supply wires must be rated 90°C or greater.

ALWAYS follow electrical code requirements specific to your area. Before undertaking an electrical project, contact your local electrical authority and your insurance company to ensure that you comply with all policies, warranties, regulations and authorities concerning this work.

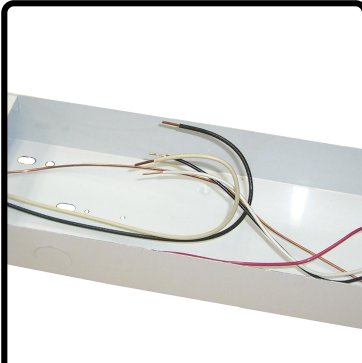
WARNING! - Disconnect power at fuse or breaker panel before beginning any electrical work. Verify that there is no power on the circuit before proceeding with fixture upgrade. LED upgrade kit installation requires knowledge of lighting fixture electrical systems. **If you are at all unsure of any of the following instructions hire a qualified electrical contractor to perform the service for you.**



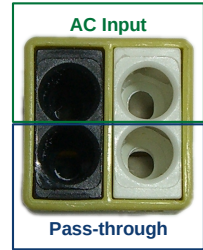
Remove the existing fluorescent tubes from the fixture and set them aside for proper disposal.



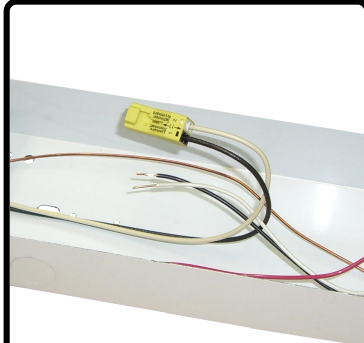
Rotate the fasteners $\frac{1}{4}$ turn to release the reflector/ channel cover. Remove and discard the old reflector/channel cover and fasteners.



Disconnect the AC wiring from the input side of the ballast. Trim the AC wires and remove $\frac{1}{2}$ " inch of insulation.



The luminaire disconnect has two **BLACK** connection points for **LINE** wires and two **WHITE** connection points for **NEUTRAL** wires. Use one **LINE/NEUTRAL** pair to supply power to the fixture. The second pair may be used as a pass-through to supply power to an additional parallel fixture.



Fully insert the **BLACK** supply wire(s) into **LINE** connection(s) on the luminaire disconnect and the **WHITE** supply wire(s) to **NEUTRAL** connection(s).



Remove and discard old socket bars and sockets. **DO NOT REUSE THE EXISTING SOCKETS WITH LED TUBES.**



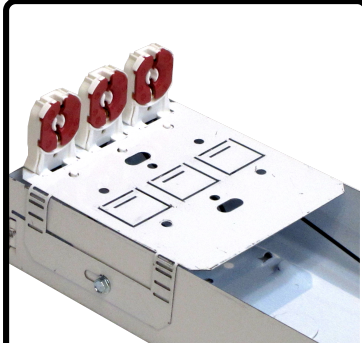
Remove the Fluorescent ballast and set aside for proper disposal. **HX Lighting offers recycling for all fluorescent tubes and ballasts.**



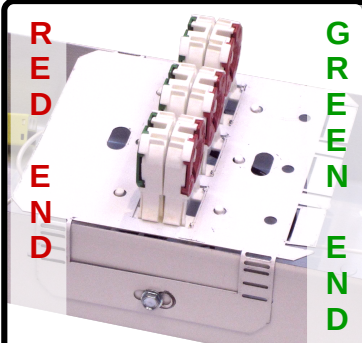
Center the socket bars on the fixture and fold down the tabs. The socket bars are designed to accommodate fixtures of various widths.



GREEN sockets are wired to **NEUTRAL**. Install the socket bar with **GREEN** sockets at the opposite end of the fixture using the #8 Tek screws provided.



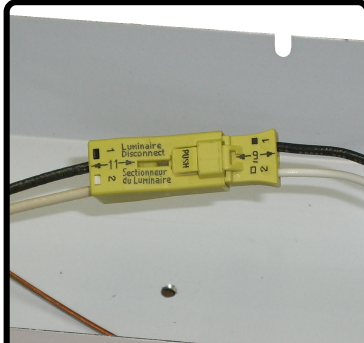
RED sockets are wired to **LINE** voltage. Install the socket bar with **RED** sockets at one end of the fixture using the #8 Tek screws provided.



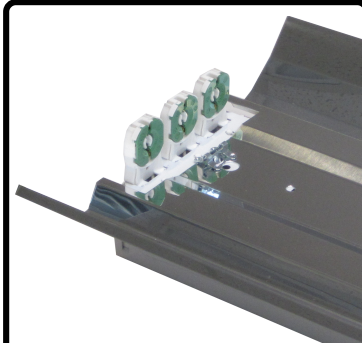
When upgrading 8' fixtures install the pre-wired center socket bars so the sockets alternate along the fixture. **RED-GREEN-RED-GREEN**



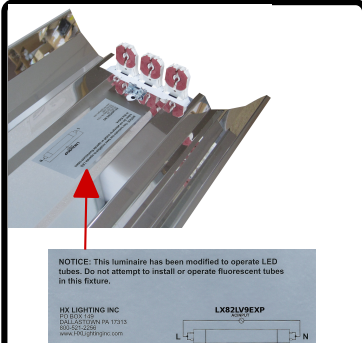
Make sure that the fixture is properly grounded. Improper grounding is a safety concern and may cause tubes to malfunction.



Connect the socket wiring to line and neutral using the luminaire disconnect. Push the disconnect together until the latch "clicks" in place.



Remove protective film from reflectors/channel covers and insert the $\frac{1}{4}$ turn locking clips perpendicular to the length of the channel.



NOTICE: This luminaire has been modified to operate LED tubes. Do not attempt to install or operate fluorescent tubes in this fixture.

HX LIGHTING INC.
PO BOX 149
DALLASTOWN, PA 17313
610.251.2226
www.HXLighting.com

LX82LV8XP
L N

Route wires inside the channel so they will not pinch or bind. Attach the **LED Conversion Notice Sticker** and install the reflector/channel cover.



Install **EcoHX X8™ Touch-Safe Type B Tubes**. Tubes are polarized and should be installed "L"ine end to **RED** and "N"eutral to **GREEN**.