

# HXL LIGHTING™

## X8-ready Troffer / Wrap



When fitted with **HXL X8 Touch-Safe** tubes these fixtures are the ideal lighting solution for:

- Offices
- Schools
- Interior retail areas and markets
- Areas with drop ceilings or low ceilings
- Anywhere a low profile fixture is required



ECW3LX848



EDID3LX822

## Features

- **Eco** – Earth-friendly design contains no mercury or lead.
- Heavy 22 gauge painted steel housing
- Wraparound pre-drilled for surface mount / Troffers available to fit 15/16" inverted t-bar grids (2' x 2' or 2' x 4')
- Multi-faceted reflectors (retro-kits only).
- Pre-wired for line-voltage use (no ballast required)
- **IP20** socket design prevents accidental shock during tube replacement.
- Sockets are color-coded to insure proper polarity when used with **HXL X8 Touch-Safe** tubes.
- Luminaire disconnect provides ease of installation and improves safety.
- Available in multiple tube configurations
- Full-color wiring diagram provided



Watts	Capacity	Description	Product Code
51W	3-X 8 ft. tubes	EcoHX/DIRECT-INDIRECT/3-X8/2x4	<b>EDID3LX824</b>
51W	3-X8 4ft. tubes	EcoHX/TROFFER/3-X8/2x4	<b>ELG3LX824</b>
27W	3-X8 2ft. tubes	EcoHX/DIRECT-INDIRECT/3-X8/2x2	<b>EDID3LX822</b>
36W	4-X8 2ft. tubes	EcoHX/TROFFER/4-X8/2x2	<b>ELG4LX822</b>
51W	3-X8 4ft. tubes	EcoHX/CURVE-WRAP/3-X8/48-IN	<b>ECW3LX848</b>
51W	3-X8 4ft. tubes	EcoHX/WRAPAROUND/3-X8/48-IN	<b>EWN3LX848</b>
34W	2-X8 4ft. tubes	EcoHX/WRAPAROUND/2-X8/48-IN	<b>EWN2LX848</b>
18W	2-X8 2ft. tubes	EcoHX/WRAPAROUND/2-X8/24-IN	<b>EWN2LX824</b>

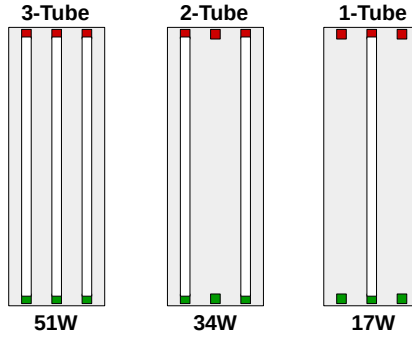
## Accessories

Description	Product Code
FLAT PRISMATIC LENS/ACRYLIC/22-1/2 x 46-1/2 [MUST SPECIFY L" x W"]	<b>H2X4</b>
FLAT PRISMATIC LENS/ACRYLIC/23-3/4 x 47-3/4 [MUST SPECIFY L" x W"]	<b>H2X4-T</b>
SUSPENDED CEILING CLIPS (2-PACK)	<b>SCC-2</b>
PULL-CHAIN SWITCH WITH 4' CORD	<b>SPC</b>
LUMINAIRE DISCONNECT/PUSH-IN/18-12AWG	<b>LD2PI</b>
TUBE SOCKET/LED/X8 [ LINE - RED ]	<b>TSLX8-LR</b>
TUBE SOCKET/LED/X8 [ NEUTRAL - GREEN ]	<b>TSLX8-NG</b>
EMERGENCY-PACK/120-277 VOLT/1-TUBE	<b>EPX8LV1</b>

# Specifications

## ELG3LX824 (troffer) / EWN3LX848 (wraparound)

Length – 47.75" / 48"  
 Width – 23.75" / 15.75"  
 Height – 3.75" / 3.25"  
 Capacity - 3, 2 or 1 HXL X8™ 48-inch tubes\*  
 Wattage - 51W, 34W or 17W

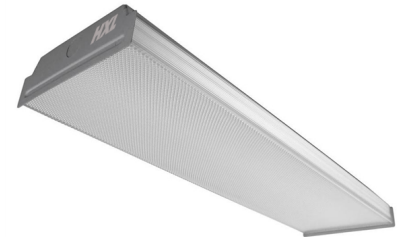
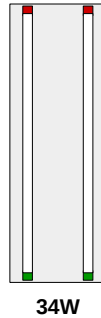


ELG3LX824

\* Use only HX Lighting X8™ Type B Touch-Safe Tubes.

## EWN2LX848 (wraparound)

Length – 48"  
 Width – 9.125"  
 Height – 3"  
 Capacity - 2 HXL X8™ 48-inch tubes\*  
 Wattage - 34W

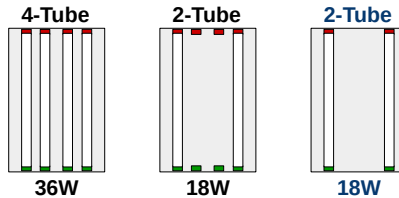


EWN2LX848

\* Use only HX Lighting X8™ Type B Touch-Safe Tubes.

## ELG4LX822 (troffer) / EWN2LX824 (wraparound)

Length – 23.75 / 24"  
 Width – 23.75 / 9.125"  
 Height – 3.75"  
 Capacity - 4\* or 2 HXL X8™ 24-inch tubes\*\*  
 Wattage – 36W, 18W, 18W



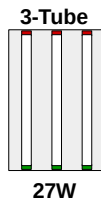
ELG4LX822

\* 4-tube available in troffer only.

\*\* Use only HX Lighting X8™ Type B Touch-Safe Tubes.

## EDID3LX822 / EDID3LX824 (troffer)

Length – 24 / 48"  
 Width – 24"  
 Height – 3.26"  
 Capacity - 3 HXL X8™ 24/48-inch tubes\*  
 Wattage – 27W, 51W

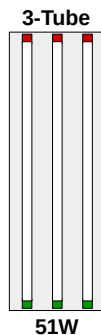


EDID3LX822

\* Use only HX Lighting X8™ Type B Touch-Safe Tubes.

## ECW3LX848 (curve-wrap)

Length – 48"  
 Width – 9.957"  
 Height – 3.478"  
 Capacity - 3 HXL X8™ 48-inch tubes\*  
 Wattage – 51W



ECW3LX848

\* Use only HX Lighting X8™ Type B Touch-Safe Tubes.